



**CAROLINA INDUSTRY  
TECHINICAL SERVICES**



# DISTRIBUTION



Hammond Power Solutions Inc.



**A B B**

# MOTION CONTROL



- AC and DC
- LOW AND MEDIUM VOLTAGE
- SOFT STARTERS
- MCC

# LOW VOLTAGE CONTROLS

- INDUSTRIAL CONTROLS
- FUSED/UNFUSED DISCONNECTS
- CONTACTORS
- ELECTRONIC RELAYS
- CIRCUIT BREAKERS
- PILOT DEVICES





**BANNER**

# Q4X LASER SENSOR

COMPLETE SENSING  
FLEXIBILITY, ENHANCED  
WITH IO LINK  
CAPABILITIES



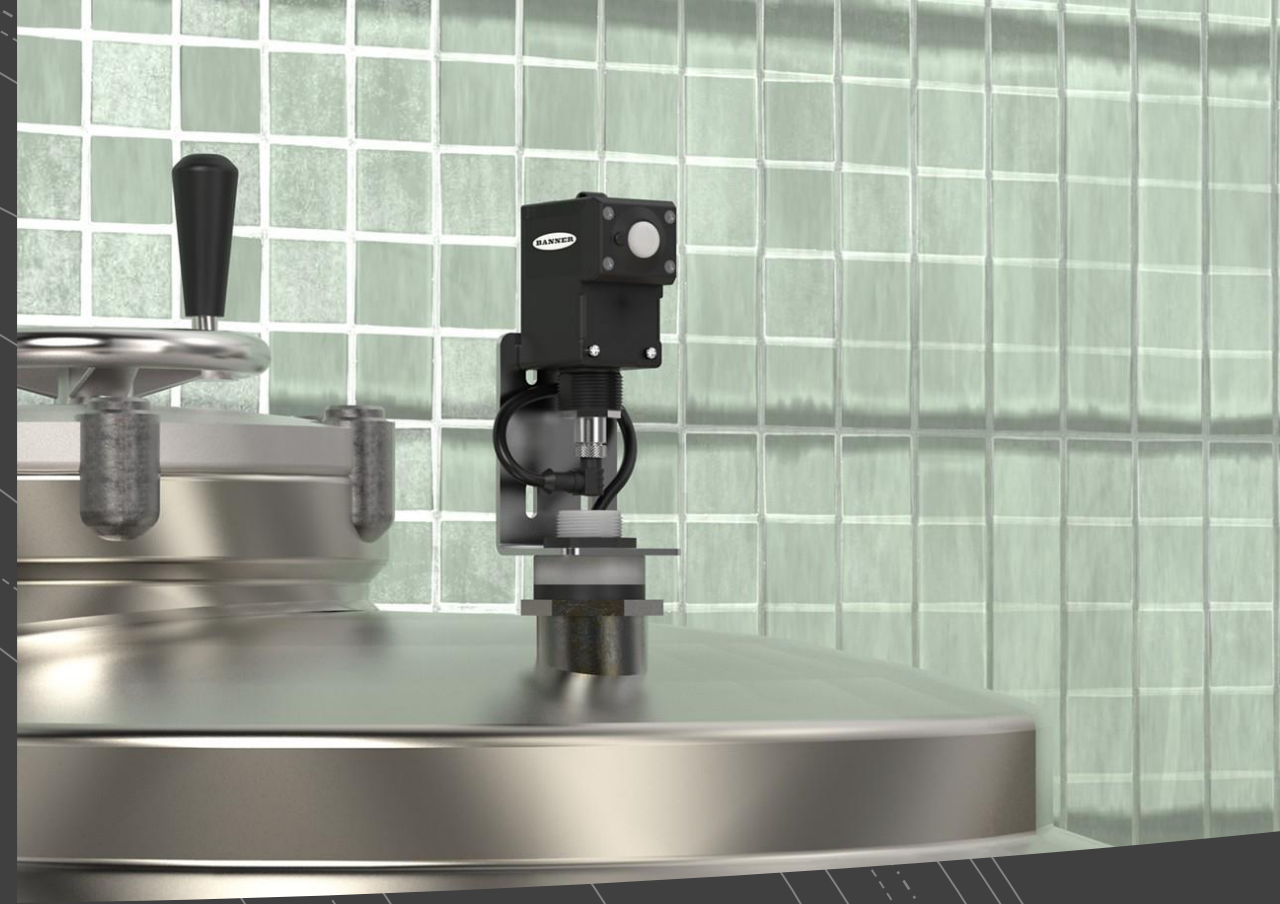
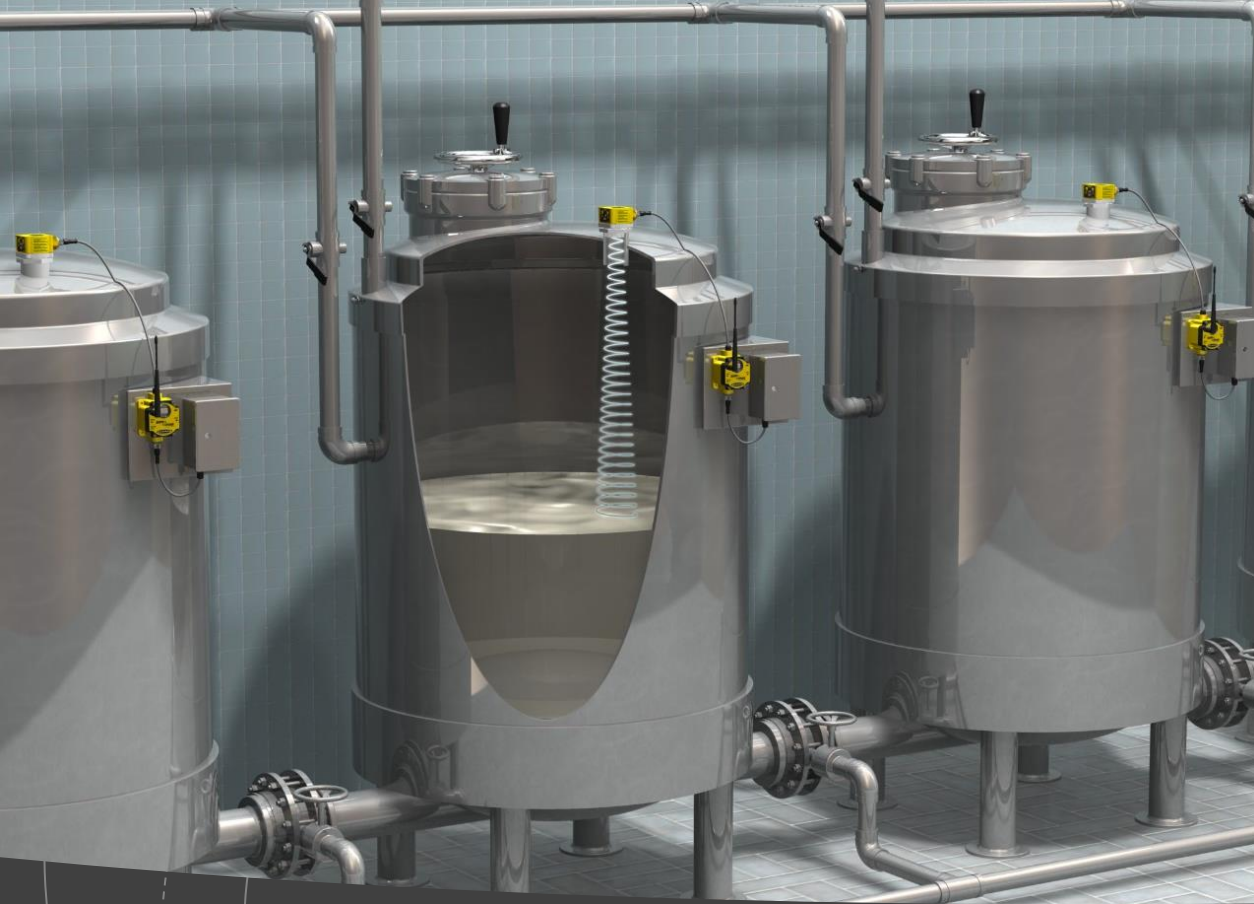


# WIRELESS CONDITION MONITORING



- MONITOR PUMP AND MOTOR TEMPERATURE, VIBRATION, AND CURRENT
- REAL TIME EQUIPMENT HEALTH TRENDS, WITH ALERTS
- WIRELESSLY MONITOR UP TO FORTY MOTORS PER KIT





# WIRELESS TANK LEVEL MONITORING

- PAIR WITH WIRELESS PRO LIGHTS OR TOWERLIGHTS FOR REAL TIME TANK FILL READ OUTS, VISIBLE ACROSS THE PRODUCTION FLOOR
- PREVENT TIME LOSS, WASTED PRODUCT, AND ENVIROMENTAL HAZARDS WITH REAL TIME LEVEL SENSING



**FORTRESS**

# amGard Pro



**Slot Together Modules To Create The Ultimate Robust Interlock Solution**



**Modular Construction Allows Easy Configuration Supported By Mounting Plates For Simple Fitting**

## Mitigating The Risk Of Trapped Operators



**Escape Release**

Escape Release Is Actuated From Within The Safeguarded Space  
amGardpro Incorporates Push Escape Release Modules



**Emergency Release**

Emergency Release Is Actuated From Outside The Safeguarded Space  
amGardpro Has Knob Override Options For Unlocking Without Tools



**Auxiliary Release**

Auxiliary Release Is Actuated From Outside The Safeguarded Space  
amGardpro Includes Security Tool Override As Standard

FORTRESS

A Halma company





**Up To 10 Elements Per Unit Possible Integrating  
Control Into Safety Device**



**Metal Construction Includes  
Simple Mounting Front**

# tGard

- FLEXIBLE MOUNTING OPTIONS
- FULLY CUSTOMIZABLE
- SAFE, INEXPENSIVE, ROBUST

**פולק**

# EFFICIENT, DURABLE POWER SUPPLIES



Industry leading DIN rail mounted power supplies, perfect for all applications requiring steady power conversion.





# Small in-in cabinet footprint

## Redundant and Hot-Swappable models

- Featuring redundant and hot-swappable models that ensure your process stays moving, even in the event of power supply failure





# Legacy Product Availability

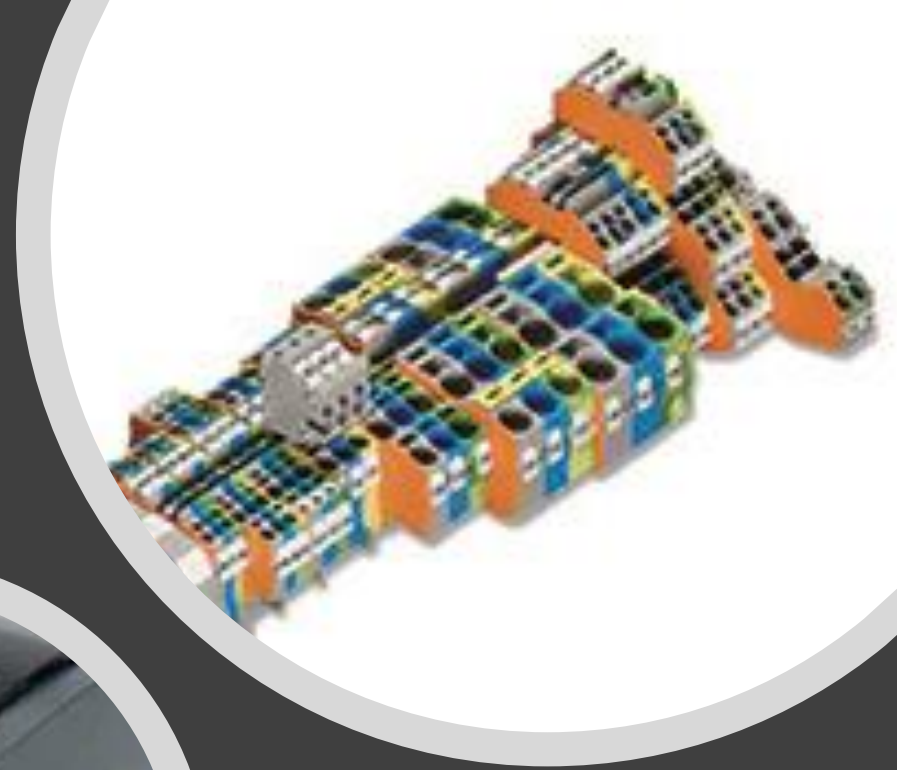


- PULS is committed to never ending life cycles on their products. All parts are manufactured by PULS so they can guarantee availability far into the future.

**WAGO**



- **The industry leader in quality and innovation**
- **Save time and ensure tight connections with spring clamp terminal blocks**
- **Lever nuts make splicing wires simple**
- **Wago label printers help to keep wiring and control components clearly marked within the panel**





**BALDOR<sup>®</sup>**



A MEMBER OF THE ABB GROUP



**Severe Duty:  
For long life in harsh  
conditions**

- Chemicals
- Oil & Gas
- Cement/Aggregate
- Mining
- Waste/Wastewater



**Washdown Duty:  
Reliability,  
Cleanability**

- Food & Beverage
- Pharmaceuticals
- Any industry where equipment hygiene is important



**General Purpose  
Permanent  
Magnet  
Used on:**

- Conveyers
- Material Handling
- Packaging machinery



# Variable Speed AC motors

- Perfect combination for efficiency and durability with an ABB Drive system
- Ask how we can help you improve reliability and efficiency in your pumps and motors



Hammond Power Solutions Inc.





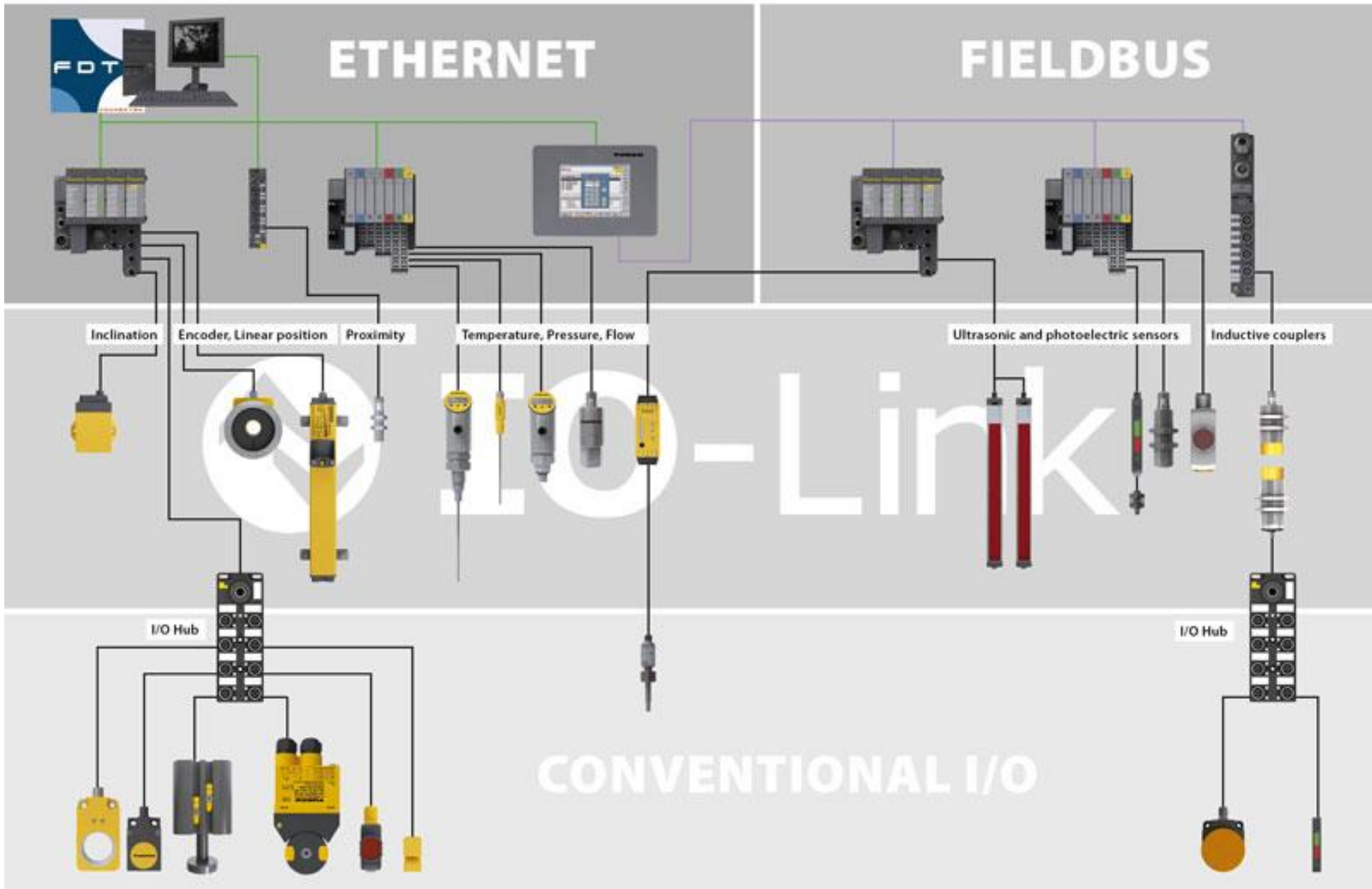


**TURCK**

# Improve process data analytics and condition monitoring through Turcks PLC /IO Link Master

- Temperature & Pressure Sensing
- Control Cabinet environmental monitoring
- Ultrasonics, inductive, linear arrays





# Banner IO Link Connectivity

- Using the Turck IO Link Master, add customization and data analytics with ease
- Monitor sensor health, product through put
- Fully customizable light and alarms with IO Link Tower Lights and Light Strips





# 508A Panel Shop

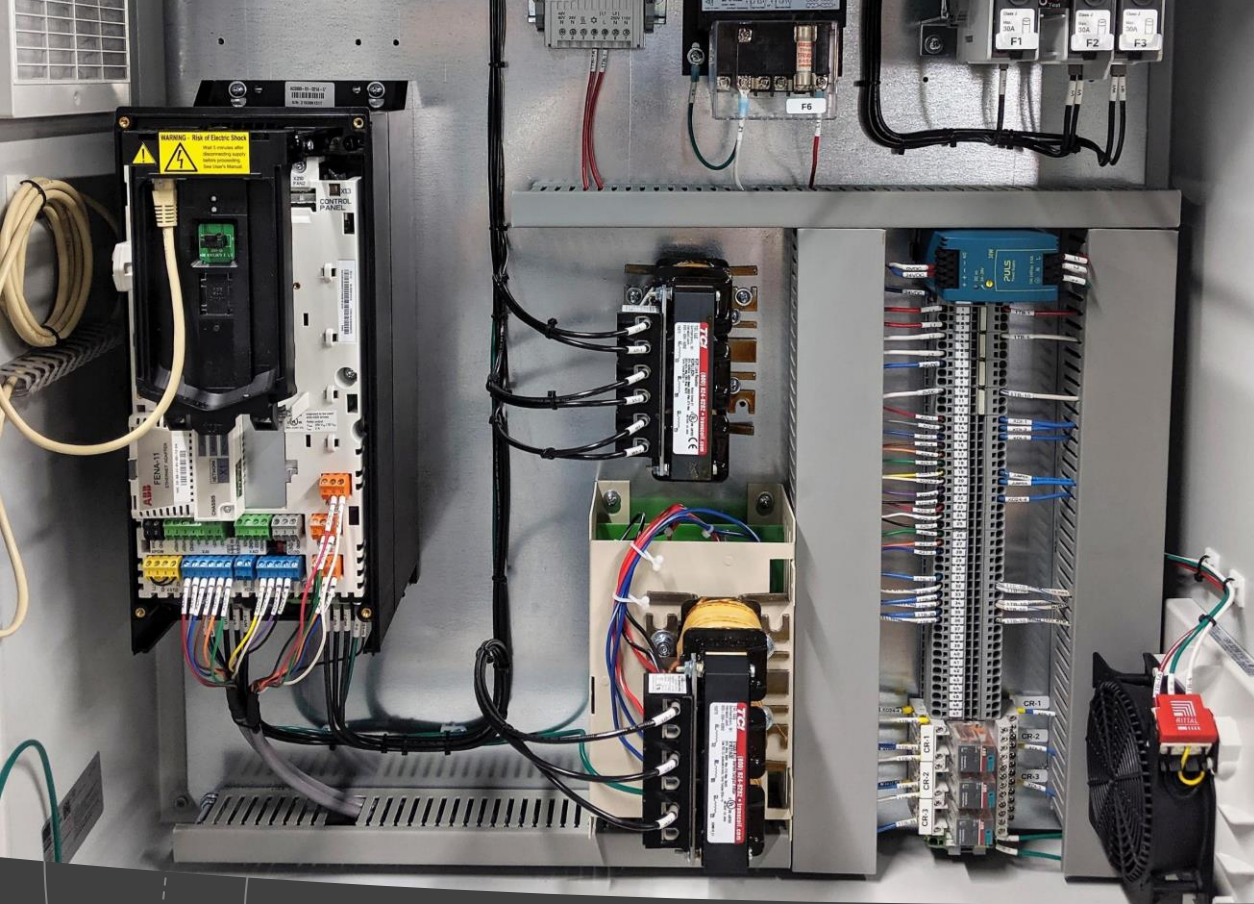


# Custom Enclosure Cutting

---

As an authorized Rittal distributor and customizer, we are not only able to get you the best pricing on new enclosures, but can cut to your specifications, saving your team time and money





**Don't Have an  
Experienced Panel  
Shop?**

**Let us help you design,  
source and build your  
next panel!**

# Top Quality

# Fully Custom

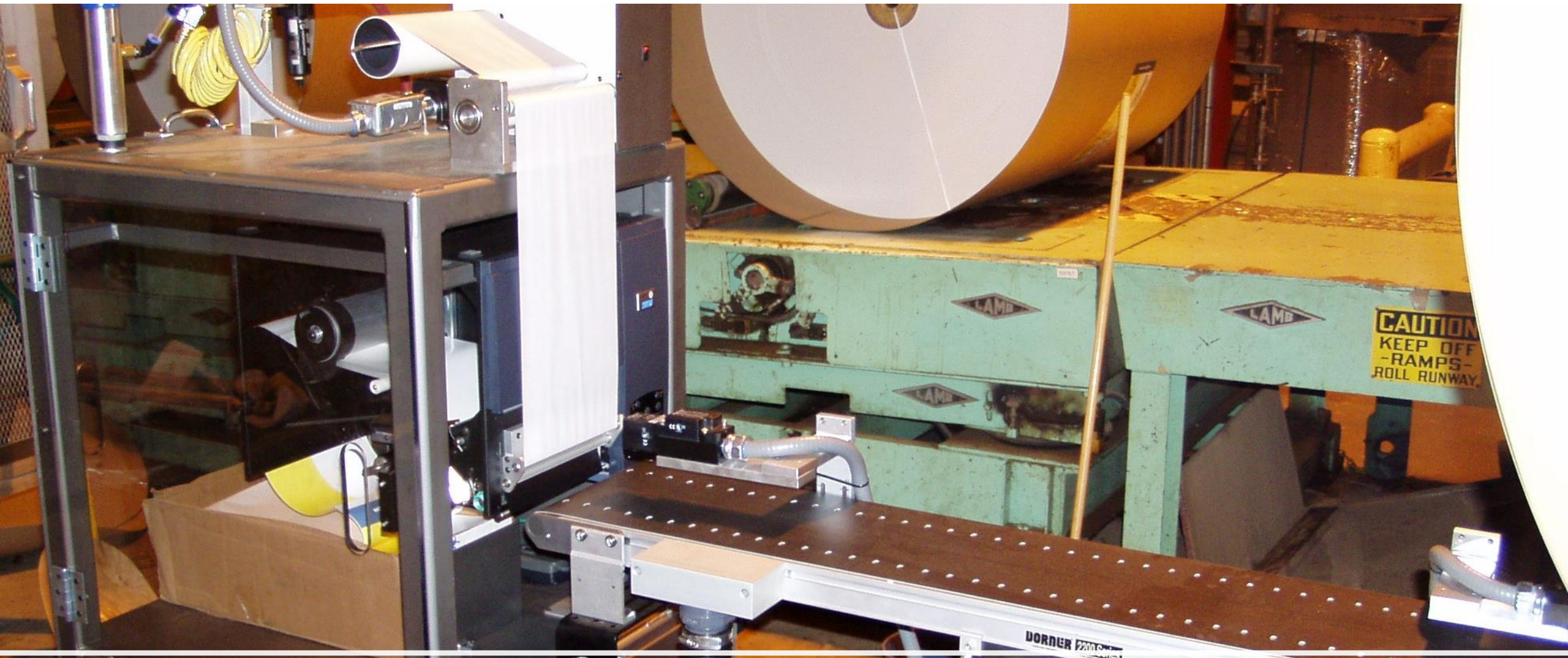




# Package Drive Cabinets

---





# Label Applicators

# MCC UPFITS WITH ABB ACS380 DRIVES



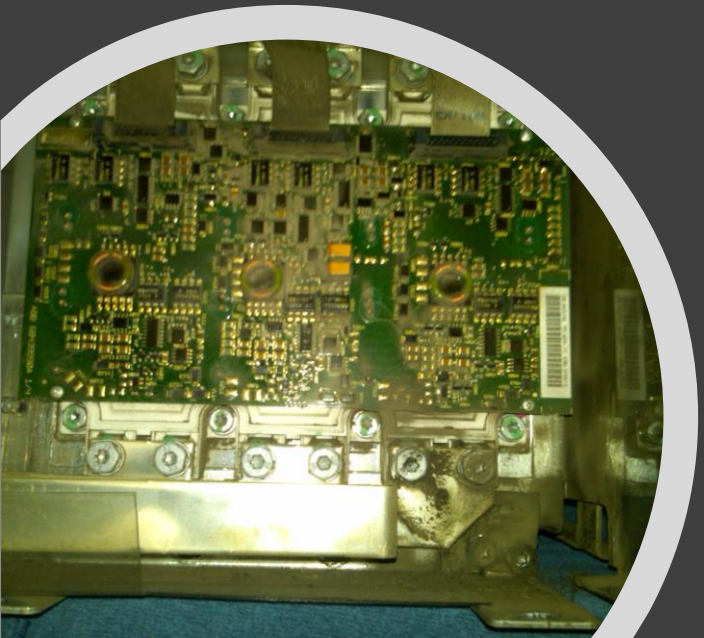
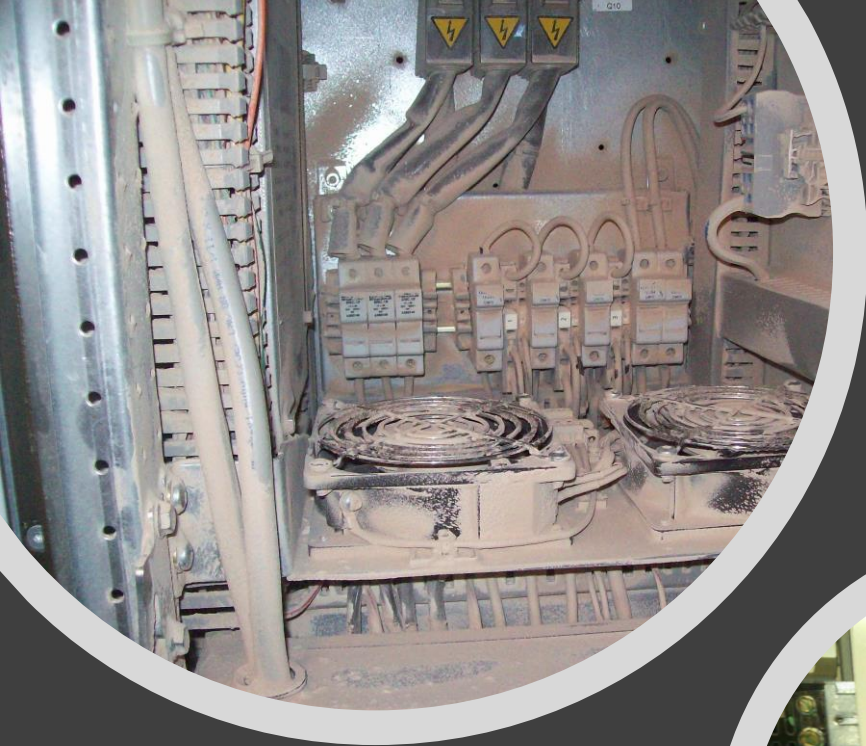
# ABB DRIVE ON SITE SERVICES

**ABB**



# Preventative Maintenance

- Protect your investment
- Replace integral parts at regular intervals
- Extend the life and efficiency of your drives



# Drive Commissioning

- Ensure proper set-up of your drive
- Extends warranty on parts and service
- Ensure optimal parameterization and efficiency

